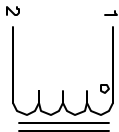


The information contained in this drawing is the sole property of CW's Coil Winding Specialist. Any reproduction in part or whole without written permission of CW's Coil Winding Specialist is prohibited.

REVISION HISTORY		SIGN & DATE		
REV	ECN	DESCRIPTION	DATE	CHK
A		PRODUCTION RELEASE	2/08/04	JKU



SCHEMATIC

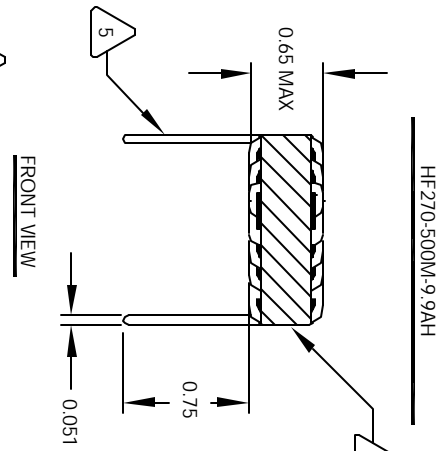
6 USING A PERMANENT MARKING METHOD MARK PART NUMBER AND REVISION, IF APPLICABLE IF NEEDED, WRAP INDUCTOR WITH GLASS TAPE TO THE CORE MUST REST FLAT ON PCB. LEADS MUST BE TANGENT FLUSH WITH THE COIL EDGE. AS SHOWN (I.E. COIL REMOVE INSULATION AND TIN LEADS 0.75 INCH

5 WIND COILS EVENLY SPACED AROUND THE CORE CONSTRUCTION: HI-POT TEST FOR WINDING TO CORE ISOLATION = 500VDC MIN CURRENT RATING : 9.9 AMPS, 40 °C TEMP. RISE, NO AIR FLOW DCR 16.0 MILLI-OHMS MAX. DC BIASED = 9.9 AMPS, INDUCTANCE = 44 UH DC BIASED=15.2 AMPS, INDUCTANCE = 40 UH INDUCTANCE = 50 UH +10% @ LOW DC BIAS, 1 KHz, 250mV SPECIFICATIONS:

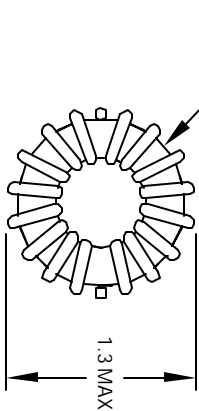
4 WIRE: UL RECOGNIZED 200°C RATED MAGNET WIRE CWS BYTE-MARK OR OTHER APPROVED PART CORE: COATED HIGH FLUX TOROIDAL CORE

3 RATING CLASS B (130°C MIN.) REQUIRED MATERIAL: UL RECOGNIZED 94V-0 FOR FLAMMABILITY

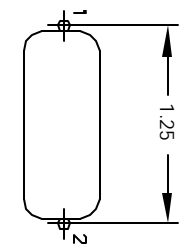
NOTES: TOROIDAL POWER CHOKE. ALL DIMENSIONS IN INCHES



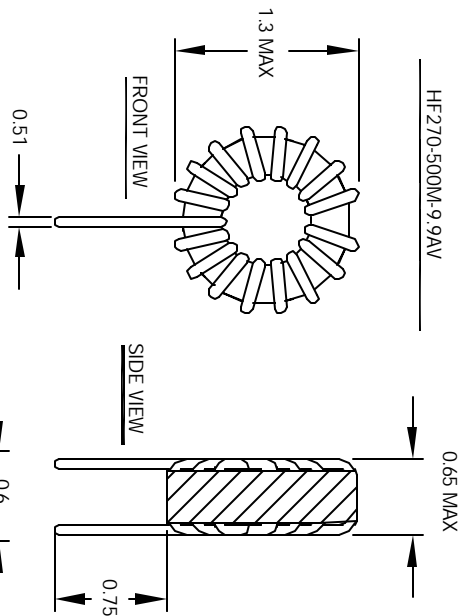
FRONT VIEW



BOTTOM VIEW

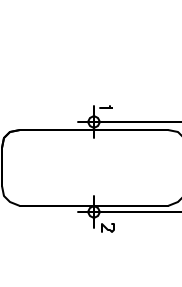


MOUNTING HOLES PATTERN



FRONT VIEW

SIDE VIEW



MOUNTING HOLES PATTERN

UNLESS OTHERWISE SPECIFIED
TOLERANCING AND TOLERANCE PER ANSI Y14.5M
ALL DIMENSIONS ARE IN NOTES AND DIMENSIONS
TOLERANCE INCHES
XXXX±0.01 X.XX±.015
XXXX±.127 X.XX±.38
ANGLE PROJECTION
DO NOT SCALE DRAWING

CODE IDENT	MFG. P/N	DESCRIPTION	ITEM NO.
AUTOCAD SOLIDWORKS SIGN	X		
DATE			
DATE			
DATE			
DATE			

DATE	2/8/04	DATE	2/8/04
DATE	2/9/04	DATE	2/9/04
DATE	3/6/04	DATE	3/6/04
DATE	3/8/04	DATE	3/8/04

SCALE	B	SIZE	078.48	REV	B
SCALE	2=1	SIZE	HF270-500M-9.9A	REV	B
			SHEET	1	OF
			SHEET	1	OF